



CENSUS OF POPULATION IN THE FUNCTION OF SCIENTIFIC RESEARCH

-The experience of the academic community -

Vlasta Kokotović Kanazir, Marija Drobnjaković
Geographical Institute “Jovan Cvijić”, SASA



Research questions

- Information on the research needs, previous attitude and experience;
- Introducing and understanding the elements of the population census;
- The correspondence of the population census and academic community requirements
- Recommendations for future use of the census data

What is high quality data?

Simple to find, easy for use and understand



Questionnaire structure

- The purpose (need) of data usage
- The most frequently used topics of the population census
- Transparency of data
- The correspondence of the population census and requirements of the academic community
- Data granularity (from general to specific)
- Availability of data at the different territorial units
- Frequency of data usage
- Downloading the census data (source and form)
- Census data quality assessment
- Limits in the data usage
- Recommendation and suggestions for improving the upcoming census 2021



Sample

researchers from several important institutions
(scientific institutes, university, public companies, etc.)

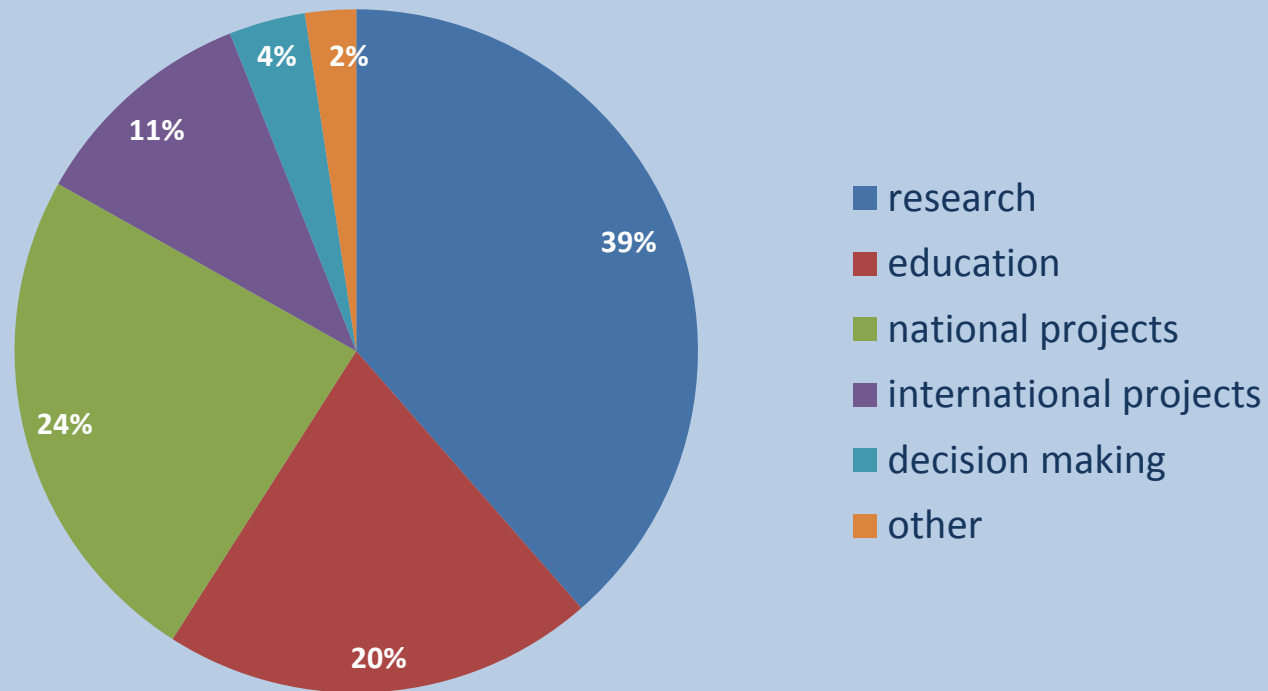
Procedure

on line questionnaire and interviews





The purpose (need) of data usage

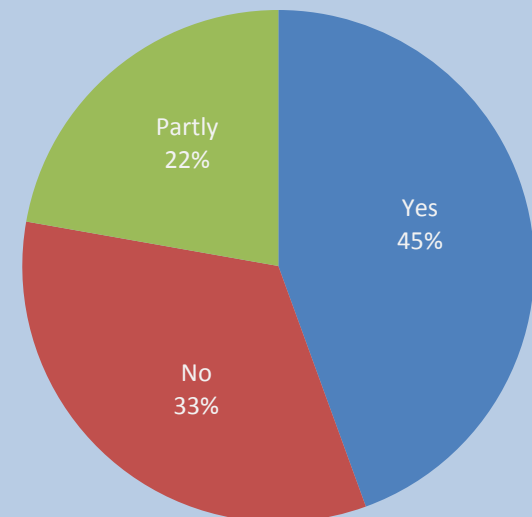


The most frequently used segments of the population census



- ✓ Socio-economic structures
- ✓ Total population
- ✓ Ethnic structure
- ✓ Households
- ✓ Migration

The correspondence of the population census and academic community requirements



Micro-data requirements

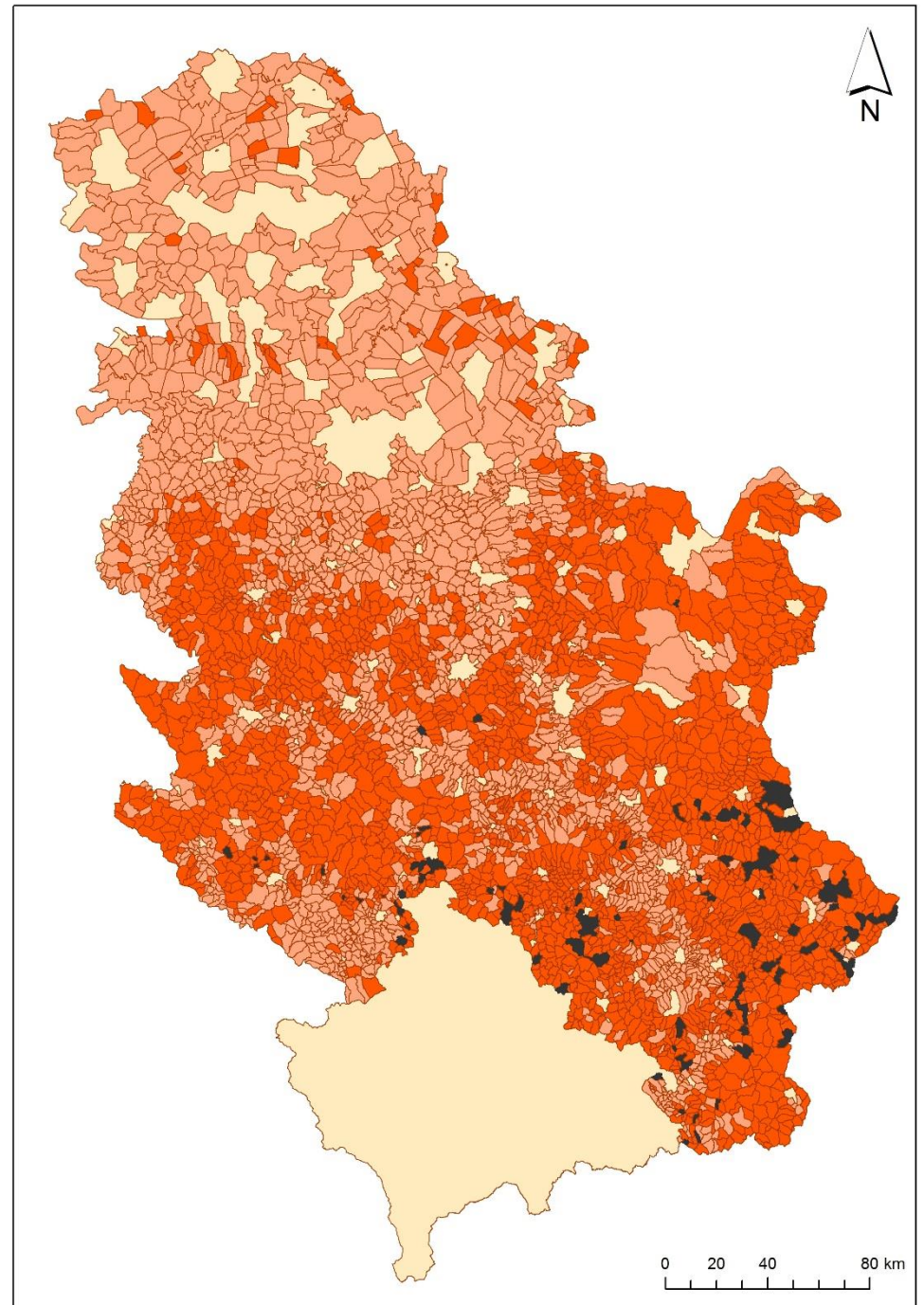
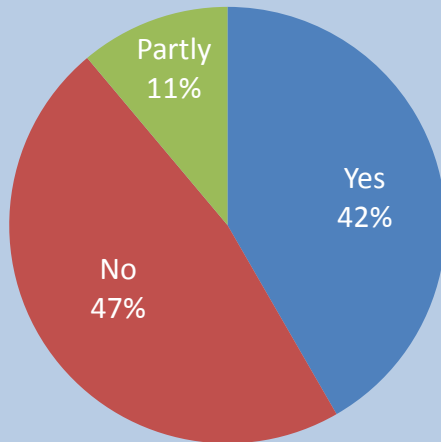
(theme of the Census of population)



- Socio-economic structures (economic activity, education)
- Migration (external migration, daily mobility)
- Ethnicity
- Dwellings
- Households
- Native language
- Combining a different features

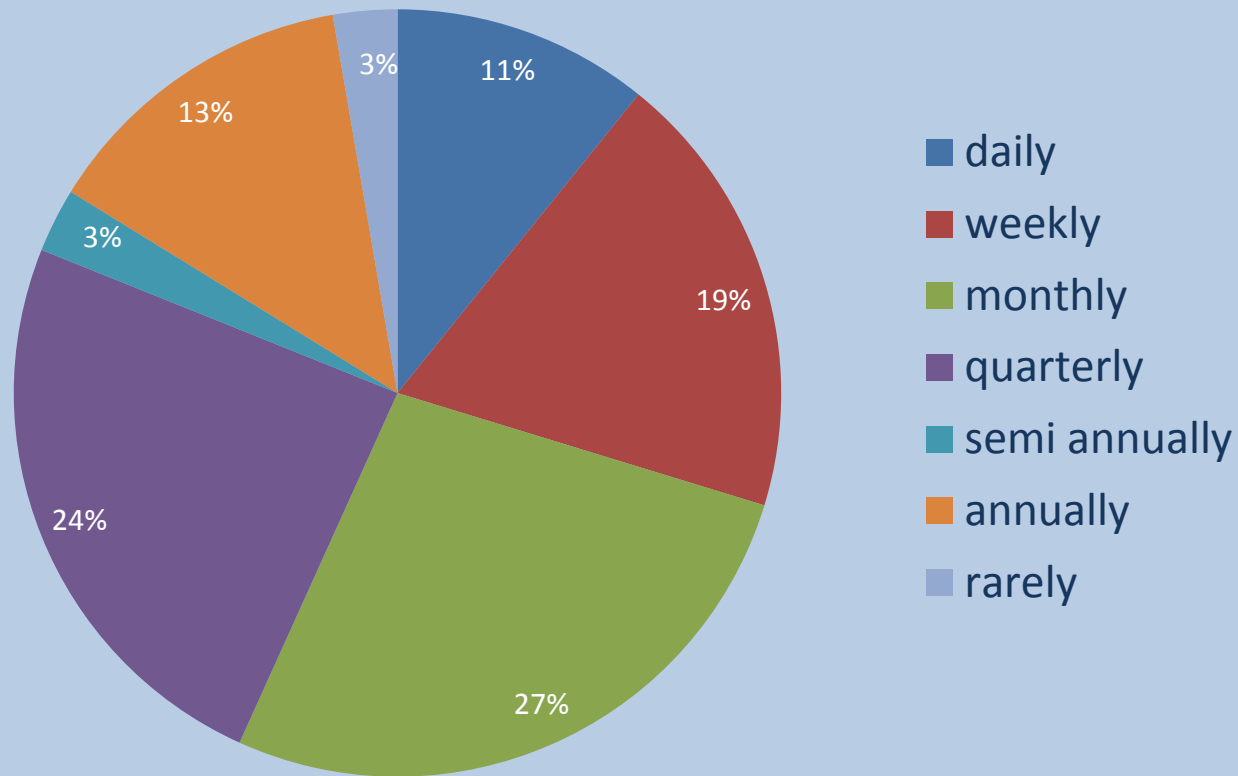


Micro-level requirements

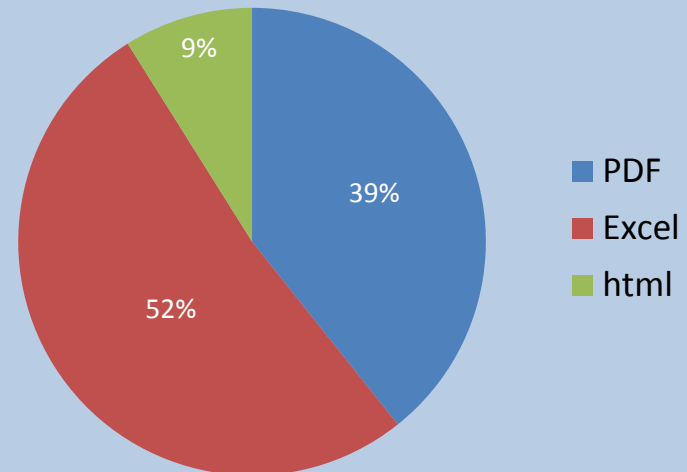
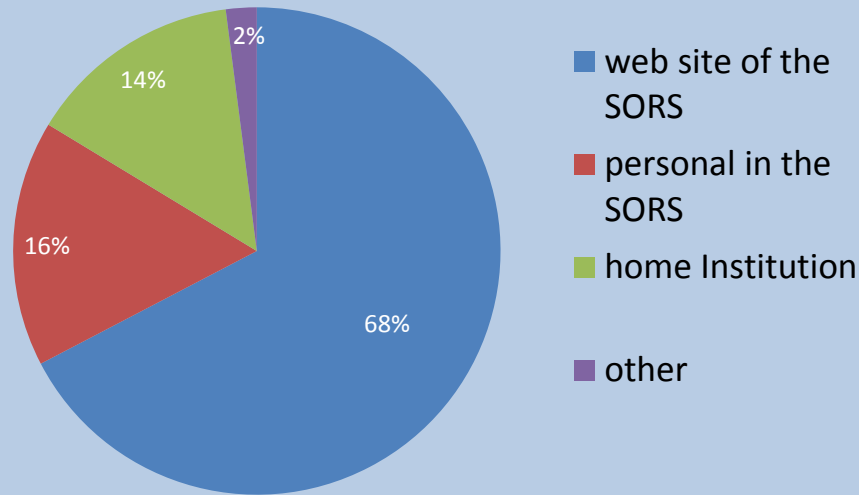




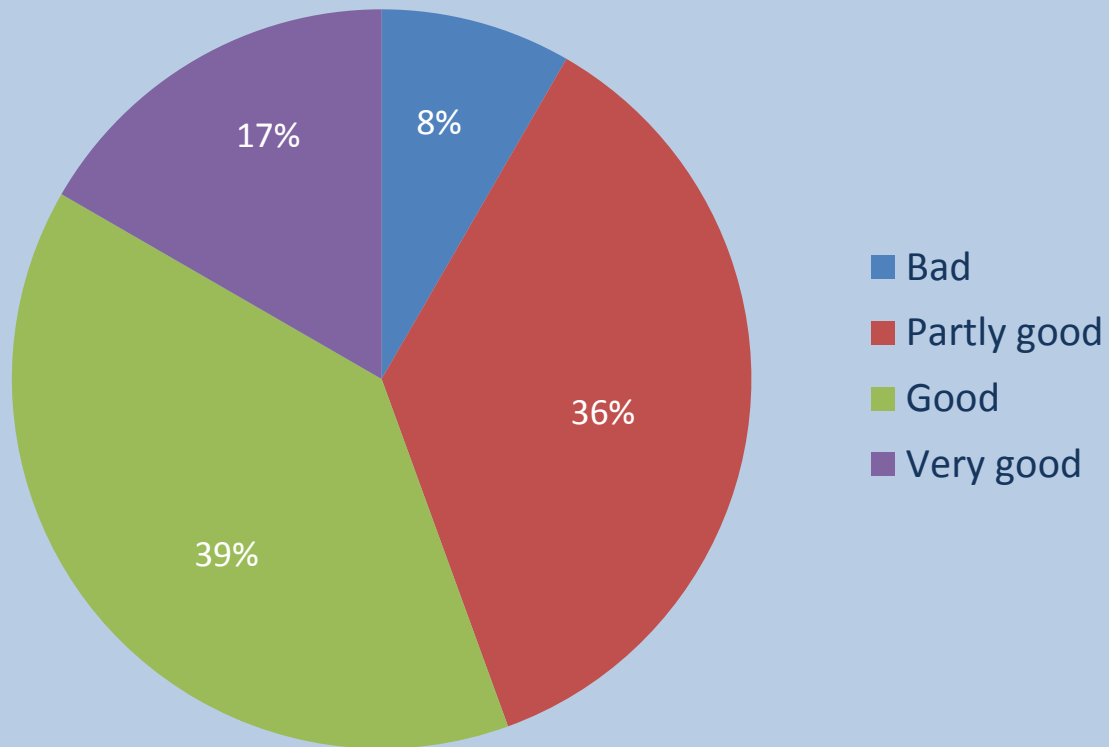
Frequency of data usage



Downloading the census data

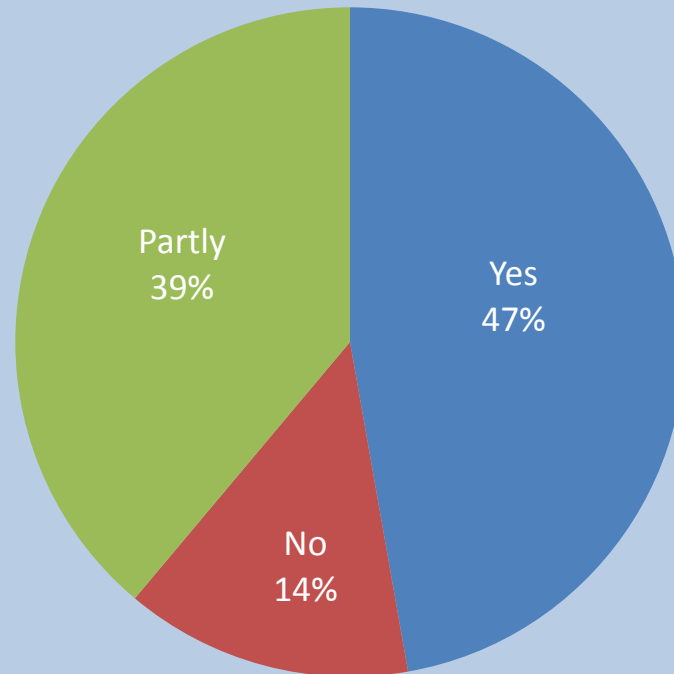


Census data quality assessment





Additional data processing



Limits in the data usage



- Geocoded files
- Site not fully transparent
- Lack of previous censuses in electronic form
- Availability of data at lower territorial unites
- More detailed classification of existing features
- Interinstitutional cooperation

Recommendation and suggestions for improving the upcoming census 2021



- Presentation of data
- Adjustment of the data format for application in GIS
- Data protection issue
- Providing data at lower territorial unites
- Faster processing and publishing of data
- Harmonization of the data on external migration with data basis in EU countries
- Data should be user friendly



THANK YOU
FOR THE ATTENTION

v.kokotovic@gi.sanu.ac.rs

m.drobnjakovic@gi.sanu.ac.rs